

**FEATURES**

- Reliable solution without power supply
- Practically no inrush current
- Integrated PIR sensor



**SPRINGS**

Standard with CS spring (concrete/gyproc). Also available as above with WS spring (gyproc/metal).

**COLOURS**

Available colours:



Matt white RAL 9016 (XX=MW)  
Matt black RAL 9005 (XX=BL)

# SensorLinea 75 HV

Fixed

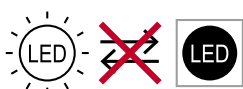
**DRIVERLESS**  
Can be connected directly to 220-240V

**SPECIFICATIONS**

Beam angle (FWHM)	80°
Fixture material	Housing: Die cast aluminium / Reflector glass: Polycarbonate
Environment	Indoor
IK rate	IK03
Operating temperature (Ta)	-20°C / +30°C <sup>1</sup>
Safety marks	EN60598 / EN62031 / EN62471
EMC compliance	EN55015
Colour consistency (SDCM)	MacAdam step 3
Warranty	7 years * (within the European Union and the countries of the Free Trade Association for products delivered after 1 May 2015)
Safety class	I
Energy class	These products contains a light source of energy efficiency class F (3000K) / E (4000K)
Detection range	120°
Turn-on time	200 ms
Inrush current	0 mA (max. 316 pcs. per type B16 Amp)
Surge protection	L-N > 1kV; L-E, N-E > 2kV
Audible noise	21 dB
Time setting	4 min. (cannot be changed)

This luminaire contains built-in LED lamps. There are no exchangeable parts inside the luminaire. EU 874/2012

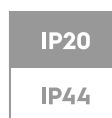
<sup>1</sup> In applications with a flat roof (i.e. car showrooms) the temperatures may exceed 30°C. Please ask our sales office for a special driver.



Sensor luminaires turn on for 4 minutes after detecting movement.



Only when the product is installed in a closed ceiling it may be exposed to water splashes, and only on its front side.



**SENSORLINEA 75 HV 3000/4000K**



**Connection box 3P**  
82x43x26 mm  
Possibility for looping by 2 cables  
max. Ø 10mm (H03/H05).

**ITEM SPECIFICATIONS (PART A)**

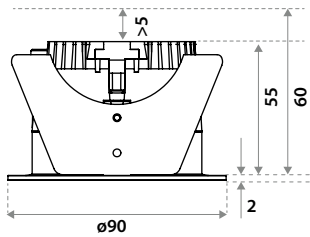
Description	Item code CS	Item code WS	Input	W	Lm	Lm/W	CRI (typ.)	UGR	Pf
SensorLinea 75 HV 600 Lm 3000K 80°	912S03XX5D02	912S03XX8D02	220-240V	15,0	600	40	83	25.9	0.99
SensorLinea 75 HV 600 Lm 4000K 80°	912S03XX5F02	912S03XX8F02	220-240V	15,0	600	40	83	25.9	0.99

**ITEM SPECIFICATIONS (PART B)**

Description	Safety class	Energy class	Weight	Dimensions single carton	Quantity per carton	Expected lifespan (25°C)		
						L70B50	L80B50	L90B50
SensorLinea 75 HV 600 Lm 3000K 80°	I	F	262 gr	105x105x61 mm	45 pcs	>54.000 hrs	>54.000 hrs	>54.000 hrs
SensorLinea 75 HV 600 Lm 4000K 80°	I	E	262 gr	105x105x61 mm	45 pcs	>54.000 hrs	>54.000 hrs	>54.000 hrs

All values are measured at 230V (+/- 7%)

**DIMENSIONS**



**HOLE SIZE**



**Using CS springs:** Ø 75 mm.  
Thickness ceiling 5-60 mm  
& recess depth 60 mm.



**Using WS springs:** Ø 77 mm.  
Thickness ceiling 1-55 mm  
& recess depth 60 mm.

**DETECTION AREA**

