



Linea AS-XS

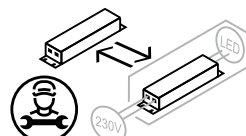
SPECIFICATIONS

Beam angle (FWHM)	18° / 37° / 60° (80° on request)
UGR (4H8H 70/50/20)	<19 (18° + 37°)
Fixture material	Die cast aluminium / Glass
Environment	Indoor
IK rate	IK03
Operating temperature (Ta)	-20°C / +45°C ¹
Safety marks	EN60598 / EN62031 / EN 62471
EMC compliance	EN55015
Colour consistency (SDCM)	MacAdam step 3
Warranty	7 years * (within the European Union and the countries of the Free Trade Association for products delivered after 1 May 2015)
Energy class	These products contains a light source of energy efficiency class F (CRI97 3000K) / D (CRI80 3000K/4000K)

This luminaire contains built-in LED lamps. There are no exchangeable parts inside the luminaire. EU 874/2012

¹ In applications with a flat roof (f.i. car showrooms) the temperatures may exceed 45°C. Please ask our sales office for a special driver.

Ask our sales department about the possibilities for:
- Extra LED options from the LUXEON Stylist Series



IP20

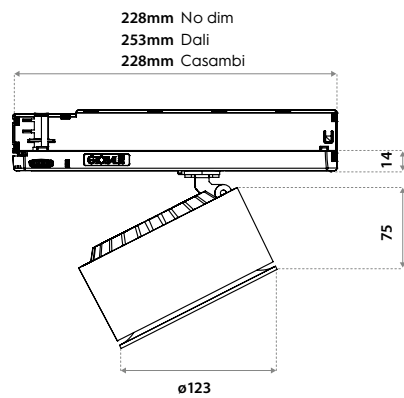
CRI80/97 VARIATIONS

Linea AS-XS LV 3000K CRI80 3000LM	page 3
Linea AS-XS LV 4000K CRI80 3400LM	page 3
Linea AS-XS LV 3000K CRI97 2500LM	page 3

CRI80/97 CHOOSE YOUR LV LUMEN OUTPUT

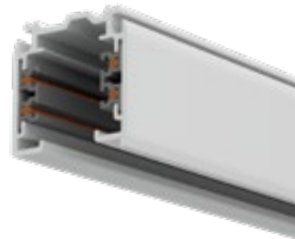
	mA	W	Lumen Output			Lumen / Watt			Driver types			
			CRI80	CRI80	CRI97	CRI80	CRI80	CRI97	CRI80	CRI97	CRI80/97	CRI80/97
			3000K	4000K	3000K	3000K	4000K	3000K	No dim	No dim	Dali	Casambi
<i>Special request</i>	500	17,9	2250	2500	1450	125	139	81	GA-016	GA-016	PRO-T61050N	GA
Standard	700	27,0	3000	3400	2150	111	126	80	GA-016	GA-016	PRO-T61050N	GA
<i>Special request</i>	800	32,1	3400	3750	2500	106	117	78	GA-016	GA-016	PRO-T61050N	On request

DIMENSIONS



TRACKS

On request! Ask our sales department about the possibilities.



HONEYCOMB ACCESSORY

Description	Type	Item code
Honeycomb filter	By our assembly	009C03BL0000



Reduces the light output by -25% compared to clear glass.

LINEA AS-XS

3000K/4000K

ITEM SPECIFICATIONS (PART A)

Description	18°		37°		60°		mA
	Item code	UGR	Item code	UGR	Item code	UGR	
Linea AS-XS 3000Lm 3000K CRI80 No dim	170403XXHK02	14.9	170403XXHL02	16.0	170403XXHM02	20.4	700
Linea AS-XS 3000Lm 3000K CRI80 Dali	170403XXE402	14.9	170403XXE502	16.0	170403XXE602	20.4	700
Linea AS-XS 3000Lm 3000K CRI80 Casambi	170403XXJ402	14.9	170403XXJ502	16.0	170403XXJ602	20.4	700
Linea AS-XS 3400Lm 4000K CRI80 No dim	170403XXHN02	15.4	170403XXHP02	16.4	170403XXHQ02	20.8	700
Linea AS-XS 3400Lm 4000K CRI80 Dali	170403XXE702	15.4	170403XXE802	16.4	170403XXE902	20.8	700
Linea AS-XS 3400Lm 4000K CRI80 Casambi	170403XXJ702	15.4	170403XXJ802	16.4	170403XXJ902	20.8	700
Linea AS-XS 2500Lm 3000K CRI97 No dim	170403XXHG02	14.3	170403XXHH02	15.3	170403XXHJ02	19.8	800
Linea AS-XS 2150Lm 3000K CRI97 Dali	170403XXE102	14.2	170403XXE202	15.2	170403XXE302	19.6	700
Linea AS-XS 2150Lm 3000K CRI97 Casambi	170403XXJ102	14.2	170403XXJ202	15.2	170403XXJ302	19.6	700

ITEM SPECIFICATIONS (PART A)

Description	W	Lm	Lm/W	CRI (typ.)	Pf	Ripple	Inrush current	B-16A Fuse	Safety class	Energy class
Linea AS-XS 3000Lm 3000K CRI80 No dim	27,0	3000	111	82	0.97	<3%	5A 50µS	50	I	D
Linea AS-XS 3000Lm 3000K CRI80 Dali	27,0	3000	111	82	0.97	<3%	5A 50µS	50	I	D
Linea AS-XS 3000Lm 3000K CRI80 Casambi	27,0	3000	111	82	0.97	<3%	5A 50µS	50	I	D
Linea AS-XS 3400Lm 4000K CRI80 No dim	27,0	3400	126	82	0.97	<3%	5A 50µS	50	I	D
Linea AS-XS 3400Lm 4000K CRI80 Dali	27,0	3400	126	82	0.97	<3%	5A 50µS	50	I	D
Linea AS-XS 3400Lm 4000K CRI80 Casambi	27,0	3400	126	82	0.97	<3%	5A 50µS	50	I	D
Linea AS-XS 2500Lm 3000K CRI97 No dim	32,1	2500	78	97	0.95	<3%	5A 50µS	50	I	F
Linea AS-XS 2150Lm 3000K CRI97 Dali	27,0	2150	80	97	0.97	<3%	5A 50µS	50	I	F
Linea AS-XS 2150Lm 3000K CRI97 Casambi	27,0	2150	80	97	0.97	<3%	5A 50µS	50	I	F

ITEM SPECIFICATIONS (PART C)

Description	Weight	Dimensions single carton	Quantity per carton	Expected lifespan B10 reported (25°C)		
				L70B10	L80B10	L90B10
Linea AS-XS	840 gr	251x241x123mm	12 pcs	>60.500 hrs	>60.500 hrs	>60.500 hrs

NEW STANDARDS REQUIRE NEW LEDS

TM-30 (new color norm): The Illuminating Engineering Society (IES) has published a new Technical Memorandum – TM-30-15 entitled “IES Method for Evaluating Light Source Color Rendition” – that promises to supplant CRI as a color metric. TM-30 relies on separate fidelity and gamut metrics, as well as a set of color samples that is more representative of real-world objects, as opposed to the pastel samples that were primarily used for the baseline CRI metric that was sometimes called Ra. The new color metric is intended to fairly and accurately characterize both LED-based solid-state lighting (SSL) and legacy sources.



Desaturated

CRI = 80 / R_g = 92



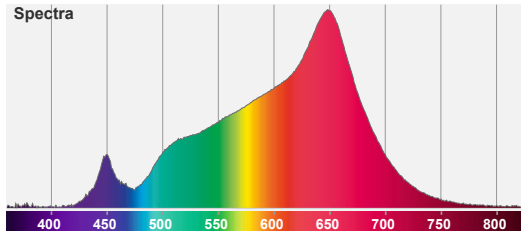
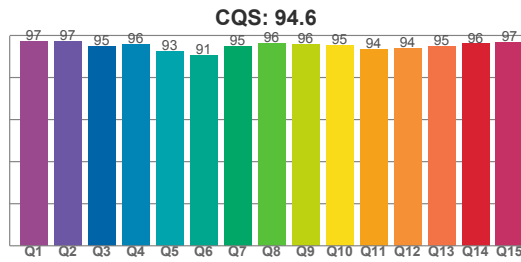
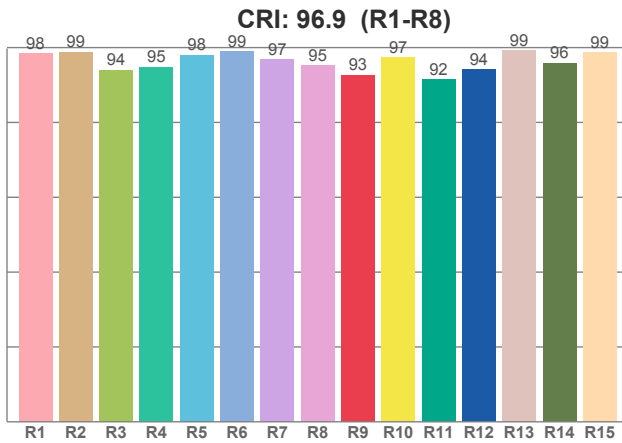
Red-Enhanced

CRI = 98 / R_g = 103

SPECIAL LEDS AVAILABLE

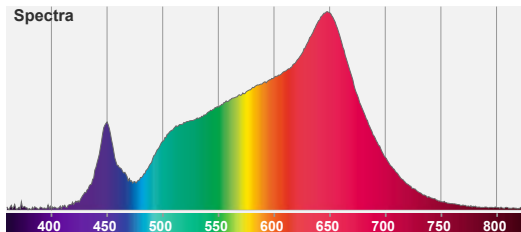
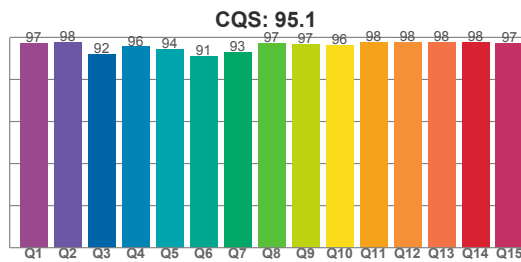
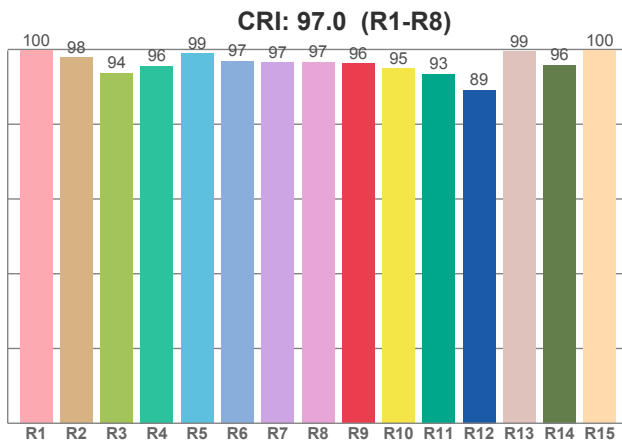
	CCT	CRI	R9	RF	RG	R15	TLCI	DOWNLIGHTS SMALL		DOWNLIGHTS LARGE		DOWNLIGHTS LARGE		ITEM CODE
								MA	LM	MA	LM	MA	LM	
CRI80	2700K	82	5	82	92	75	69	350 mA	1550	700 mA	2900	1200 mA	4800	51-4028-27-1
CRI80	3000K	82	5	81	93	75	66	350 mA	1625	700 mA	3000	1200 mA	5000	51-4028-30-1
CRI80	4000K	82	5	81	93	74	66	350 mA	1700	700 mA	3400	1200 mA	5700	51-4028-40-1
CRI97	2700K	97	93	96	103	99	97	350 mA	1150	800 mA	x	1400 mA	x	50-3031-27
CRI97	3000K	97	96	95	103	100	97	350 mA	1250	800 mA	2500	1400 mA	3750	50-3031-30
CRI97	4000K	97	96	95	103	100	97	350 mA	1350	800 mA	x	1400 mA	x	50-3031-40
CrispWhite	3000K	90	61	87	102	89	83	350 mA	780	900 mA	2300	1400 mA	3550	51-4029-30
Red Meat	1800K	82	81	77	119	95	60	350 mA	515	900 mA	1750	1400 mA	2350	51-4042-00
Bread & Pastries	2700K	92	54	89	96	86	91	350 mA	770	900 mA	2600	1400 mA	3500	51-4045-00

2700K



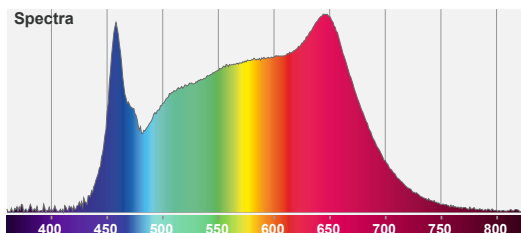
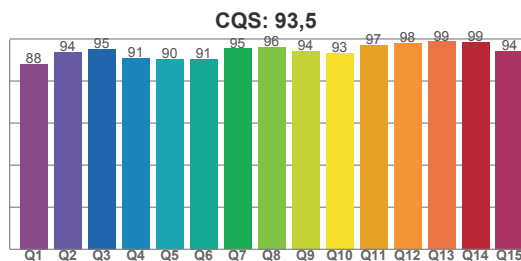
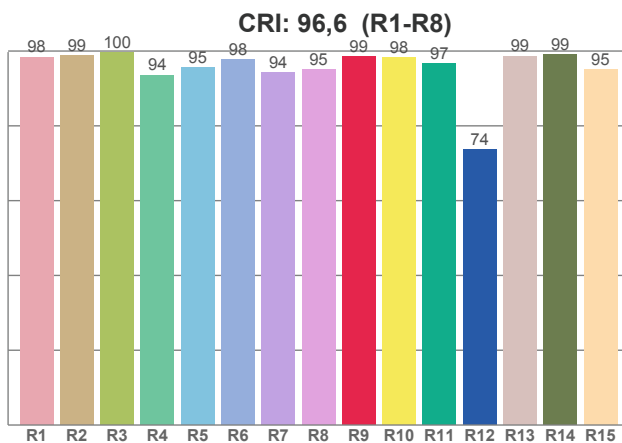
CCT	CRI	CRI R9	TM30 Rf	TM30 Rg	CQS
2700K	96.9	92.7	96.0	102.6	94.6

3000K



CCT	CRI	CRI R9	TM30 Rf	TM30 Rg	CQS
3000 K	97.0	96.2	95.0	103.3	95.1

4000K



CCT	CRI	CRI R9	TM30 Rf	TM30 Rg	CQS
4000K	96.6	98.5	88.3	96.2	93.5